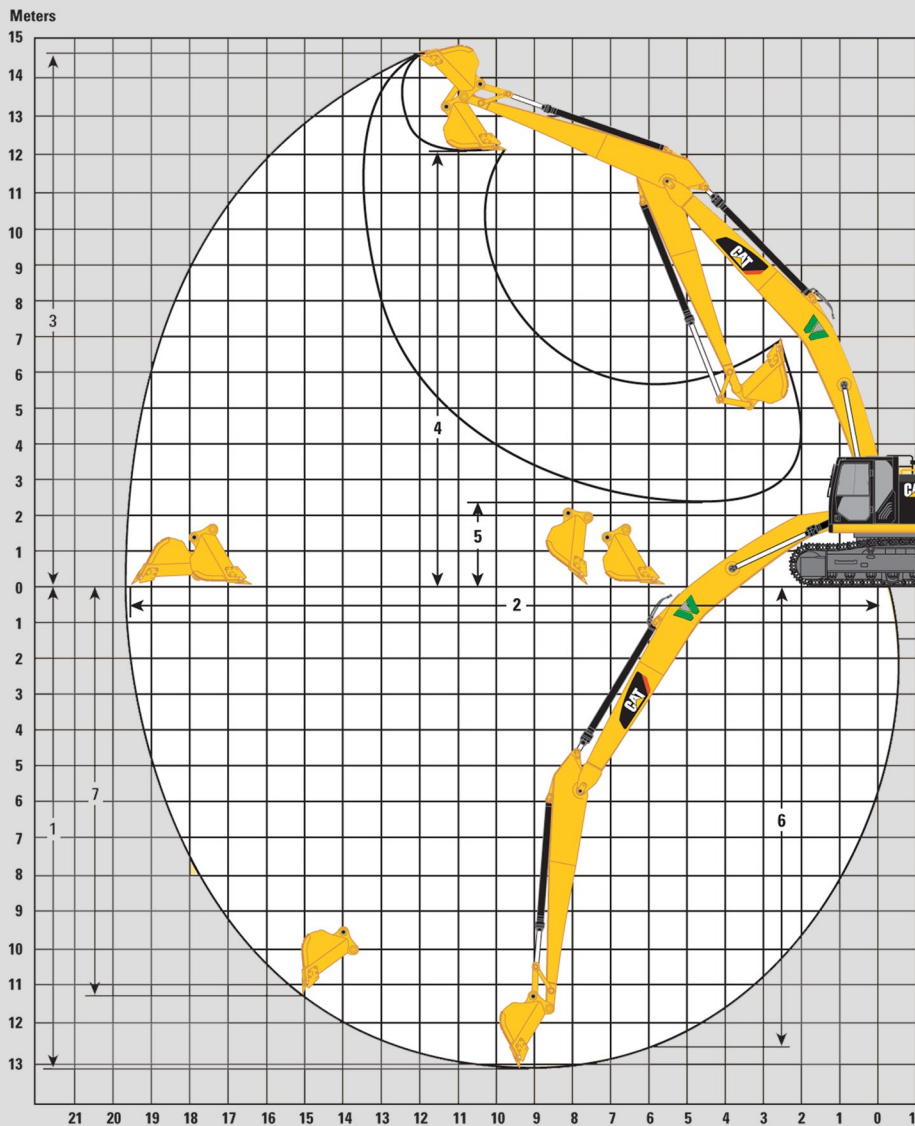


CAT 349 LRE

Long Reach Excavator

60t+ longreaches available | Up to 25m outreach | 2D & 3D machine control | Various attachments available



Boom Option	LRE Boom 11.5 m
Stick Option	LRE Stick 8.5 m
1 Maximum Digging Depth	13 040 mm
2 Maximum Reach at Ground Level	19 640 mm
Maximum Radius of Working Equipment	19 790 mm
3 Maximum Cutting Height	14 700 mm
4 Maximum Loading Height	12 030 mm
5 Minimum Loading Height	2250 mm
6 Maximum Depth Cut for 2440 mm Level Bottom	12 600 mm
7 Maximum Vertical Wall Digging Depth	11 280 mm

Dimensions may vary depending on bucket selection.

